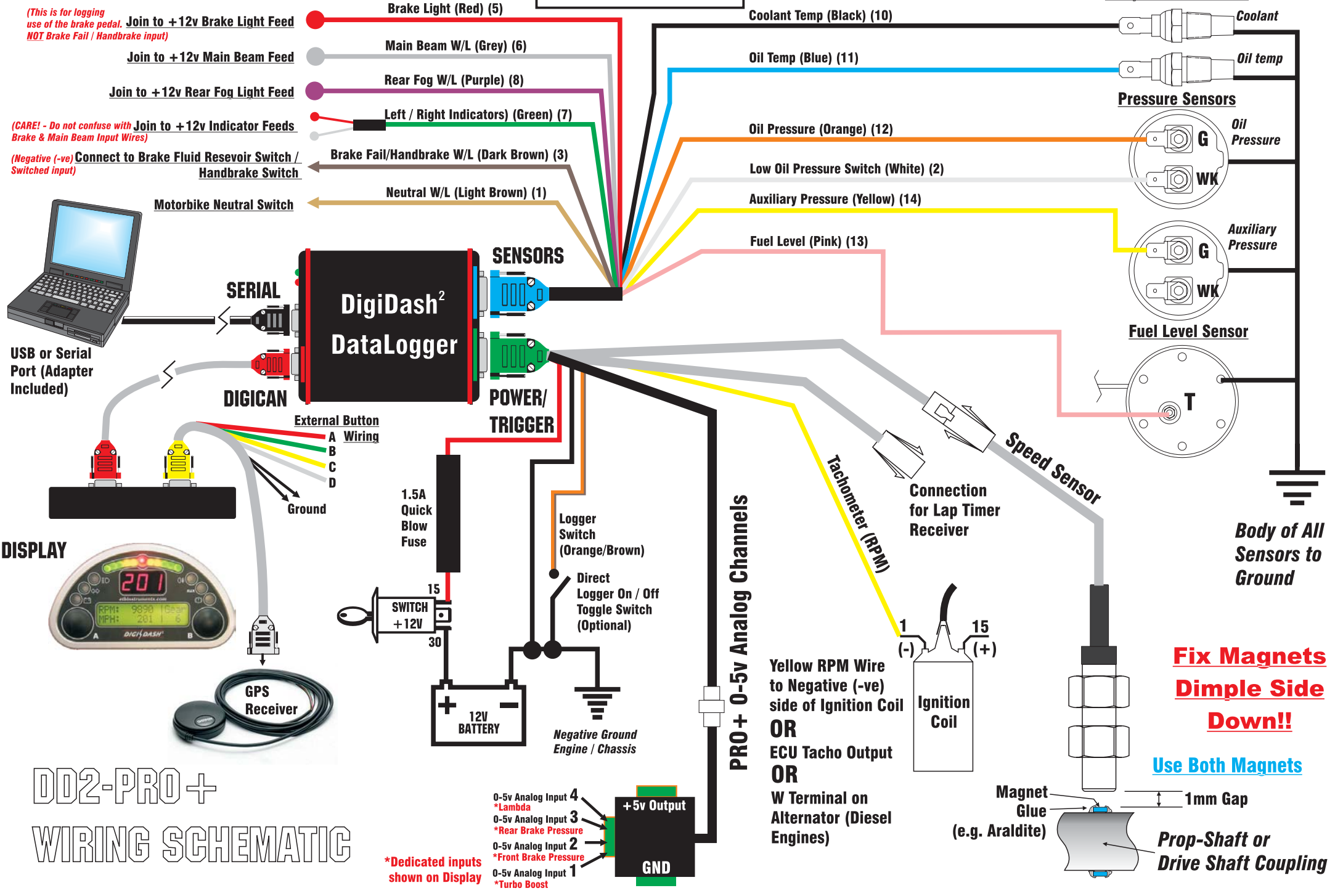


Connections to Existing Loom/ Switches

Refer to Manual for further information

Connections to Sensors



(This is for logging use of the brake pedal. Join to +12v Brake Light Feed NOT Brake Fail / Handbrake input)

Join to +12v Brake Light Feed

Join to +12v Main Beam Feed

Join to +12v Rear Fog Light Feed

(CARE! - Do not confuse with Join to +12v Indicator Feeds Brake & Main Beam Input Wires)

(Negative (-ve) Connect to Brake Fluid Reservoir Switch / Handbrake Switch Switched input)



USB or Serial Port (Adapter Included)

SERIAL

DIGICAN



SENSORS

POWER/ TRIGGER

External Button Wiring

- A
- B
- C
- D

Ground

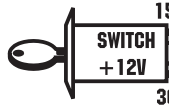
DISPLAY



GPS Receiver



1.5A Quick Blow Fuse



12V BATTERY

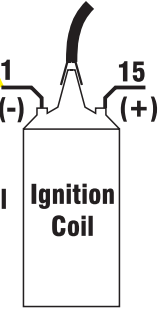
Negative Ground Engine / Chassis

Logger Switch (Orange/Brown)

Direct Logger On / Off Toggle Switch (Optional)

PRO + 0-5v Analog Channels

Yellow RPM Wire to Negative (-ve) side of Ignition Coil OR ECU Tacho Output OR W Terminal on Alternator (Diesel Engines)



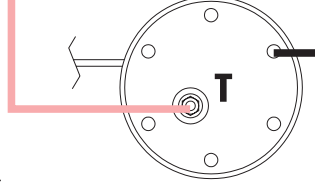
1 (-)

15 (+)

Tachometer (RPM)

Connection for Lap Timer Receiver

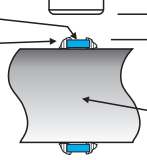
Speed Sensor



Fix Magnets Dimple Side Down!!

Use Both Magnets

Magnet Glue (e.g. Araldite)



Prop-Shaft or Drive Shaft Coupling

Body of All Sensors to Ground



*Dedicated inputs shown on Display

